

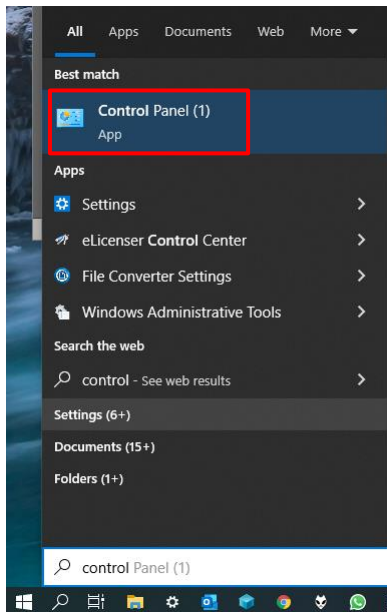


Clevy Bluetooth Keyboard

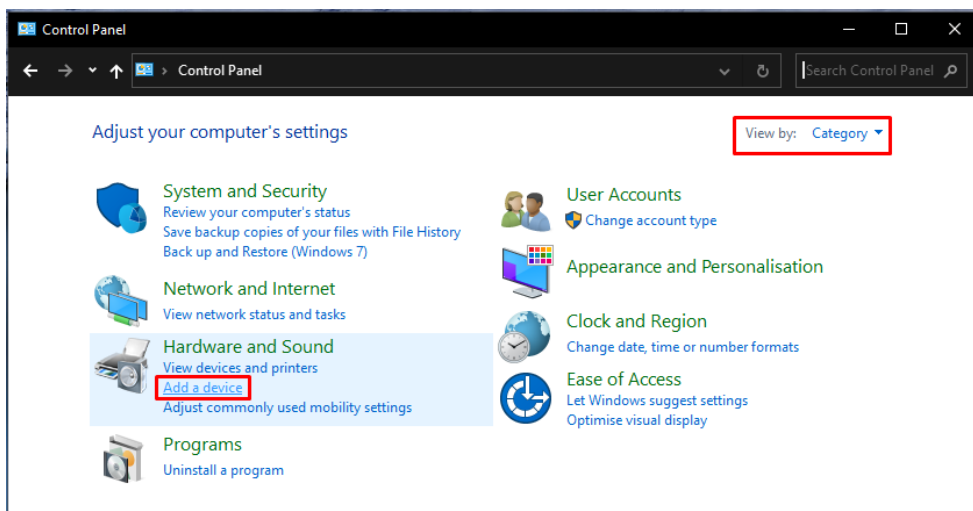
Pairing solution

Windows 10

Are you having problems (re)connecting the Clevy Bluetooth Keyboard to your Windows device? Here is a solution to get a new passcode to get your Clevy Keyboard reconnected.



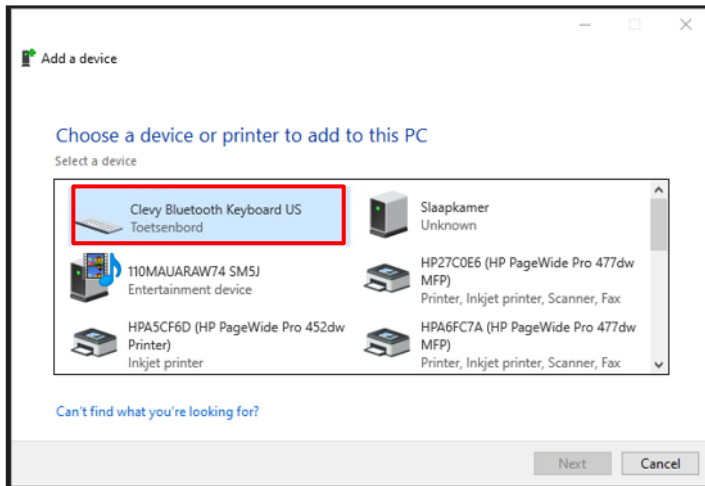
1. Open the [Control Panel](#) in Windows 10.



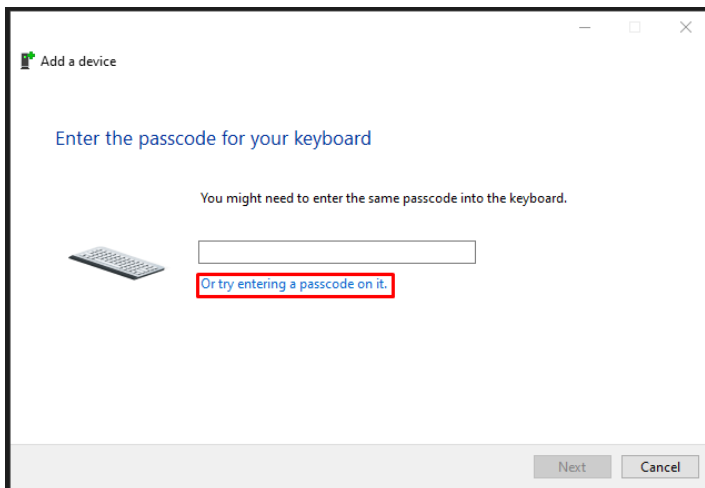
Select "[View by: Category](#)" and click "[Add a device](#)" under "[Hardware and Sound](#)".



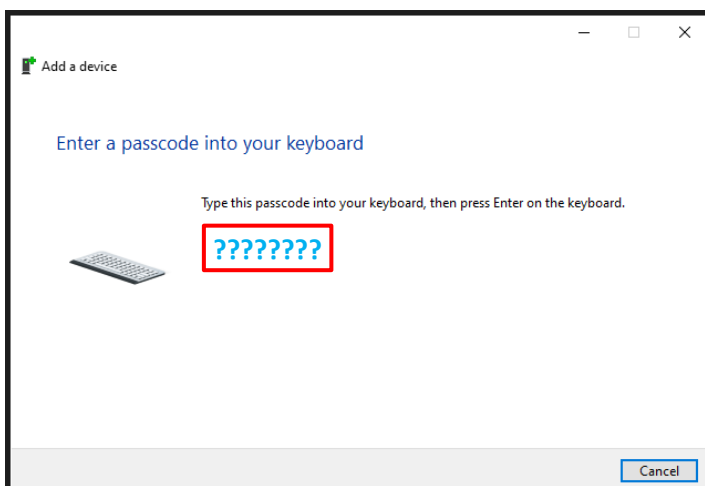
2. Press the [Bluetooth pairing button](#) on the backside of the Clevy Keyboard. The left blue led light (on the front of the Clevy Keyboard) is now blinking.



3. Clevy Bluetooth Keyboard shows up in this window. Select “Clevy Bluetooth Keyboard” and click “Next”.



4. Click “Or try entering a passcode on it”



5. Type the **shown passcode** into the Clevy Keyboard and then **press Enter** on the Clevy Keyboard.
6. The Clevy Keyboard is now paired and connected to your device.